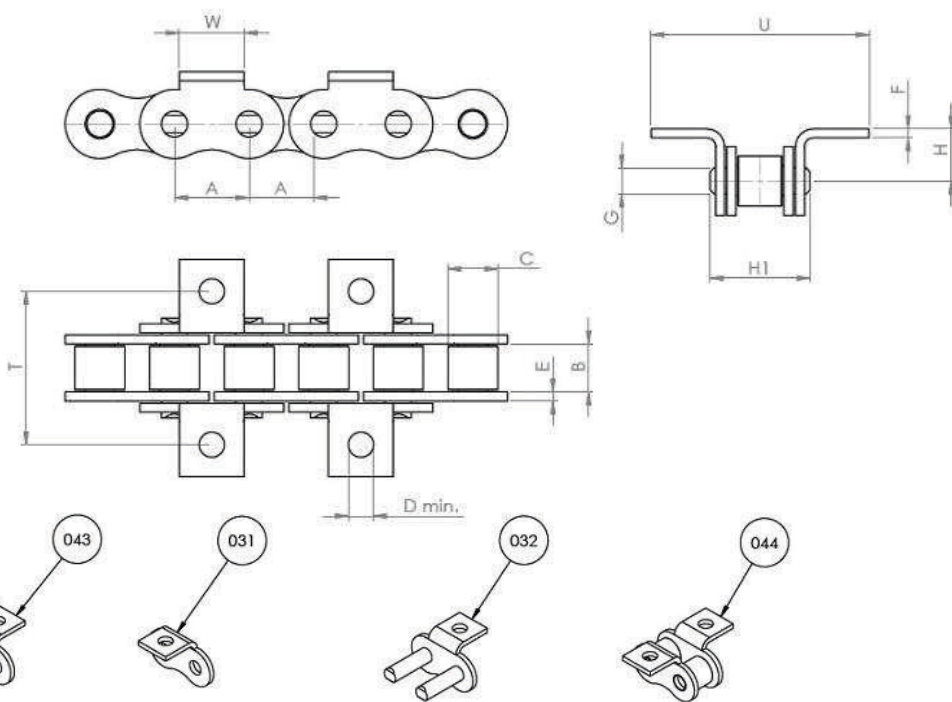
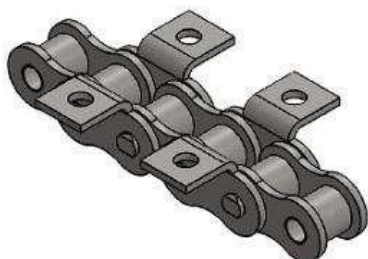


# CATENE OE CON ATTACCHI K1 (K1) VERS. OGNIBENE/AS

## OE CHAINS WITH K1 (K1) ATTACHMENTS OGNIBENE/AS VERSION



### ISO STANDARD

CHAIN CODE	REF.	A - PITCH (MM)	B - INSIDE WIDTH	C - ROLLER DIAM MIN	E - PLATE WIDTH INNER MAX	F - PLATE WIDTH OUTER MAX	G - PIN DIAM. MAX	H1 - PIN LENGTH MAX	W	H	D MIN	T	U	ISO606 TENSILE STRENGTH (NEWTONS) MIN
512191241	06B1	9.525	5.720	6.350	1.250	1.000	3.280	12.500	8	6.7	3.3	19.6	28.5	8900
511603241	08B1	12.700	7.750	8.510	1.500	1.500	4.450	16.500	11	8.5	4.3	27.6	41.9	17800
511623241	10B1	15.875	9.650	10.160	1.500	1.500	5.080	18.800	14	10.3	5.3	31.8	49.6	22200
511642241	12B1	19.050	11.680	12.070	1.760	1.760	5.720	21.900	18	12.2	6.4	35.2	54.6	28900
51666241	16B1	25.400	17.020	15.880	3.700	3.000	8.270	34.900	24	17	8.4	58	83.8	60000
511682241	20B1	31.750	19.560	19.050	4.400	4.100	10.170	39.800	30	21	10.4	69	98.7	95000



OGNIBENE S.P.A. - VIA DEL TIPOGRAFO, 6 - 40138 BOLOGNA - ITALY  
 TEL: +39 051 534225 - FAX: +39 051 535083  
[sales@ognibenechaintech.it](mailto:sales@ognibenechaintech.it) - [www.ognibenechaintech.com](http://www.ognibenechaintech.com)